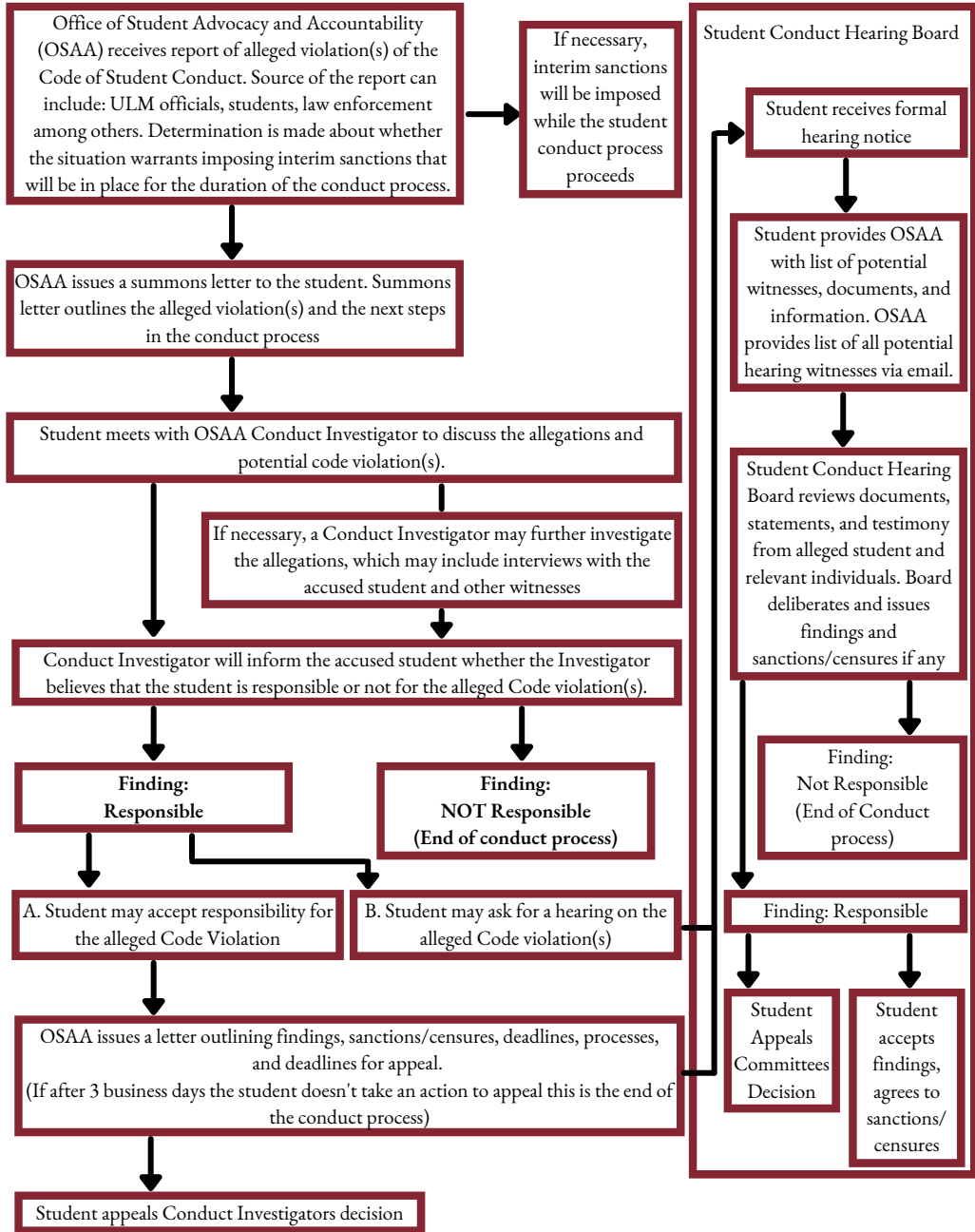


# University of Louisiana Monroe's Student Conduct Process Flowchart

This flowchart provides only a general overview of the student conduct process. For more details, please refer to the Code of Student Conduct, which governs the conduct process. Portions of this flow chart may not apply to situations involving sexual misconduct



## Important Reminders

- Findings are based on a preponderance of evidence, meaning, "It is more likely than not" that a violation occurred
- Failure to meet OSAA response deadlines and/or sanction deadlines will result in a **hold** being placed on the alleged/ sanctioned students' account
- All official summons and notices will be emailed to the alleged/sanctioned student's ULM email account